

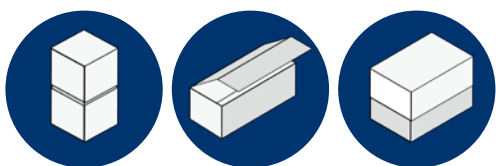
BOX LINE WRAPPER

Box gluing with new wrapping technology

Model changeover without changing the forming tools

Design: rigid box packaging from cardboard

Box Line Wrapper BLW 200



BLW 200
up to 40
products/min



Technical data

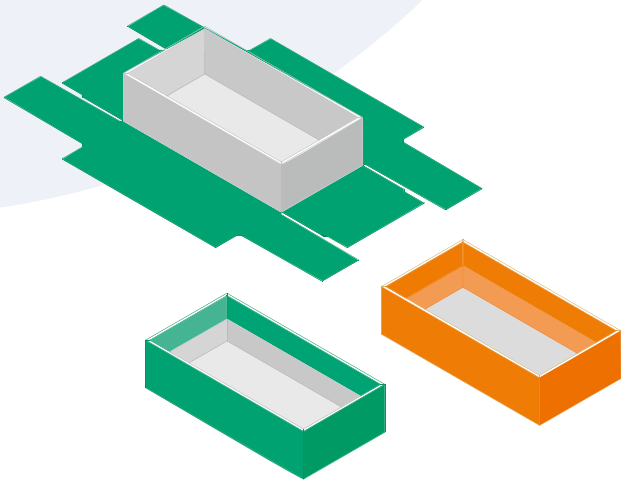


KOLBUS BOX LINE WRAPPER BLW 200

The machine is used for laminating boxes

Benefits:

- Simple computerised operation
- Innovative technology based on forming plates
- Higher quality
- Higher productivity, no complex retooling



Basic equipment BLW 200

- Copilotsystem mit Touchscreen
 - Choice of production mode
 - Job memory
 - Operator guided production changes
 - Automatic format adjustment
 - Operating instructions
 - Fine adjustments via +/- keys during running production
 - Product counter (Job, shift and start/stop counter)
 - Indication of machine and material flow malfunctions
 - Operator guided malfunction elimination

Cloth feeder

- Gluing station for processing hot-glue with premelter
 - Glue application adjustment from outside the machine
 - Viscosity control
- Buffer area for the feeding of the boxes
- Cloth transport with vacuum belt
- Camera system for precise placement of the boxes on the cloth

Robot for positioning the boxes the boxes on the cloth

- Automatic corrections during production
- Rub down station

Four laminating stations for laminating boxes

- Inline coupling with Box Line Former, model BLF 500
- Delivery with conveyor belt (height 1,000 mm)
- 10 format plates (1,000 mm x 215 mm x 15 mm)
- Servo-controlled drive technology based on Siemens
- All quality-relevant elements with separate servo drive
- Smart Line Module for feeding drive energy back into the line network
- Safety standard according to CE directives and specifications

Remote Service Gateway / Coupling with model RSG 800

- Remote Service Gateway / Coupling with model RSG 800.B

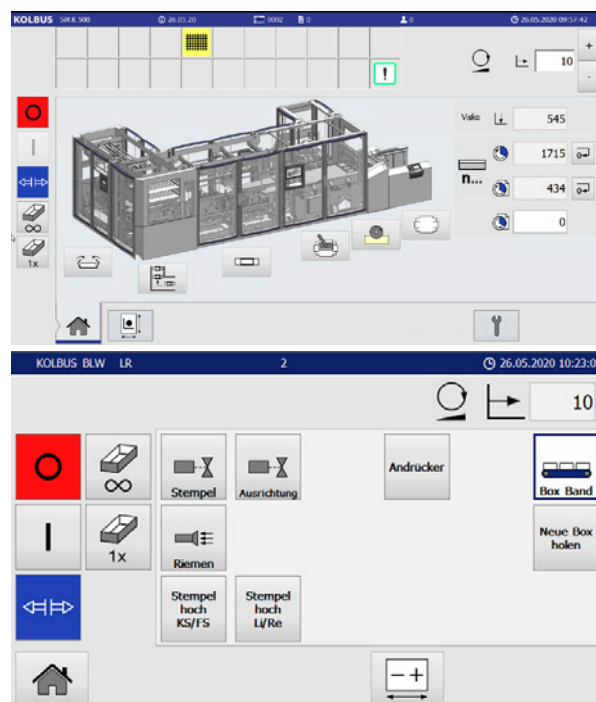


Box Line Wrapper BLW 200



BLW 200 – shelf with format plates (left), operator-guided production changes via Copilotsystem (right)

Display: Main panel,
Operating panel
for wrapping left side



Expansion of the equipment

Infeed

- Manual feeding
- Inline coupling with Box Line Taper BLT 200
- Electrical connection for voltage supply and control of an upstream belt

Delivery unit

- Delivery via conveyor belt, type KT.L 700
Dimensions of KT.L 700
Length 3,000 mm, Width 750 mm, Height 1,000 mm
- Additional format plates



Optional: Inline coupling with Box Line Taper BLT 200

Technical data

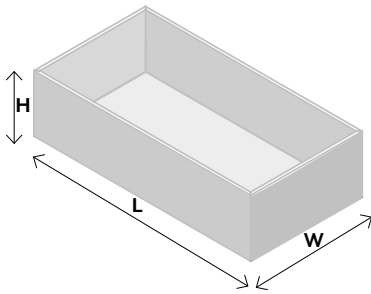
Size range Box

- o Length box L: min. 56 mm | max. 570* mm
- o Width box W: min. 56 mm | max. 360* mm
- o Height box H: min. 20 mm | max. 170* mm
- o Thickness board: min. 1 mm | max. 3 mm
depending on material and format

*The maximum box length, box width and box height are interdependent. The following applies:

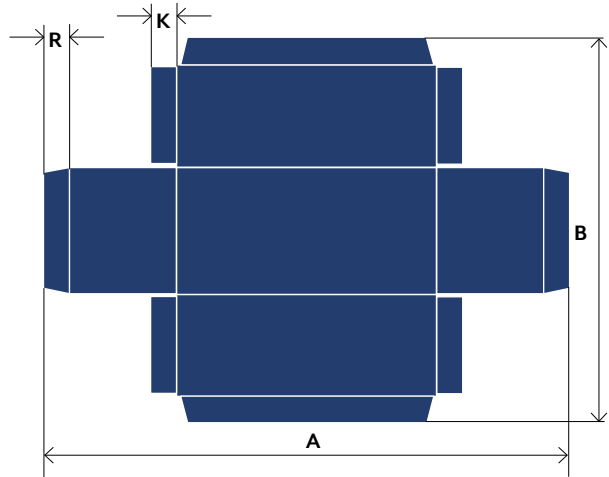
$$L = 2 \times H + L \leq 735 \text{ mm and } W = 2 \times H + W \leq 525 \text{ mm}$$

The interior dimensions of the box depend on the cardboard thickness



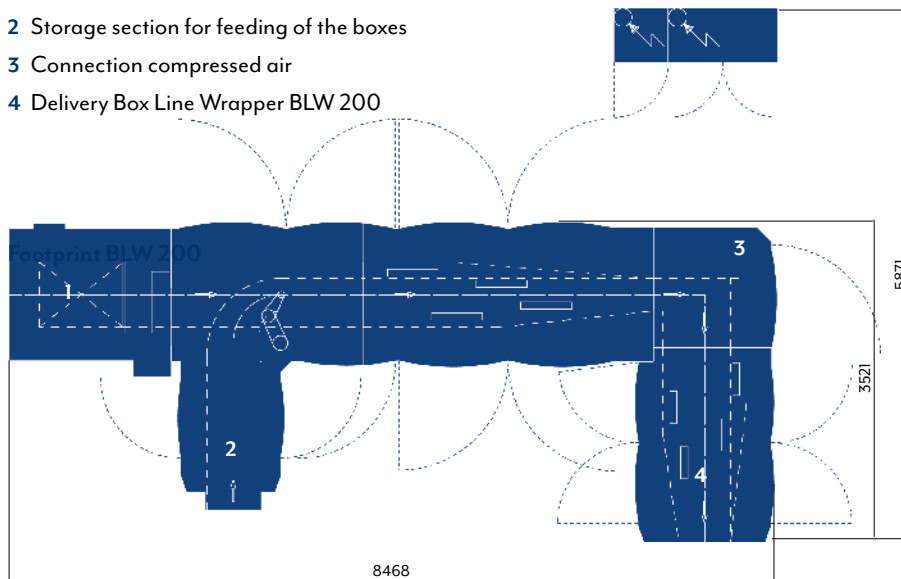
Size range cloth

- o Length cloth A: min. 120 mm | max. 815 mm
- o Width cloth B: min. 120 mm | max. 605 mm
- o Wrap dimension R: min. 15 mm | max. 85 mm
- o Side wrap dimension K: min. 15 mm | max. 85 mm



Footprint BLW 200

- 1 Cloth feeder BLW 200
- 2 Storage section for feeding of the boxes
- 3 Connection compressed air
- 4 Delivery Box Line Wrapper BLW 200



Mechanical speed

- o up to 40 cycles/min
- For box height > 135 mm: max.: 25 cycles/min

Net production is subject to sizes and materials

The customer has to provide:

- o Compressed air requirement
- o 30 Nm³/h
- o Factory line pressure 6 bar
- o Compressed air supply see extra sheet

Electrical equipment:

- o 3 phase, 400 volt / N / PE, 50 cycles

Weight: 12.540 kg